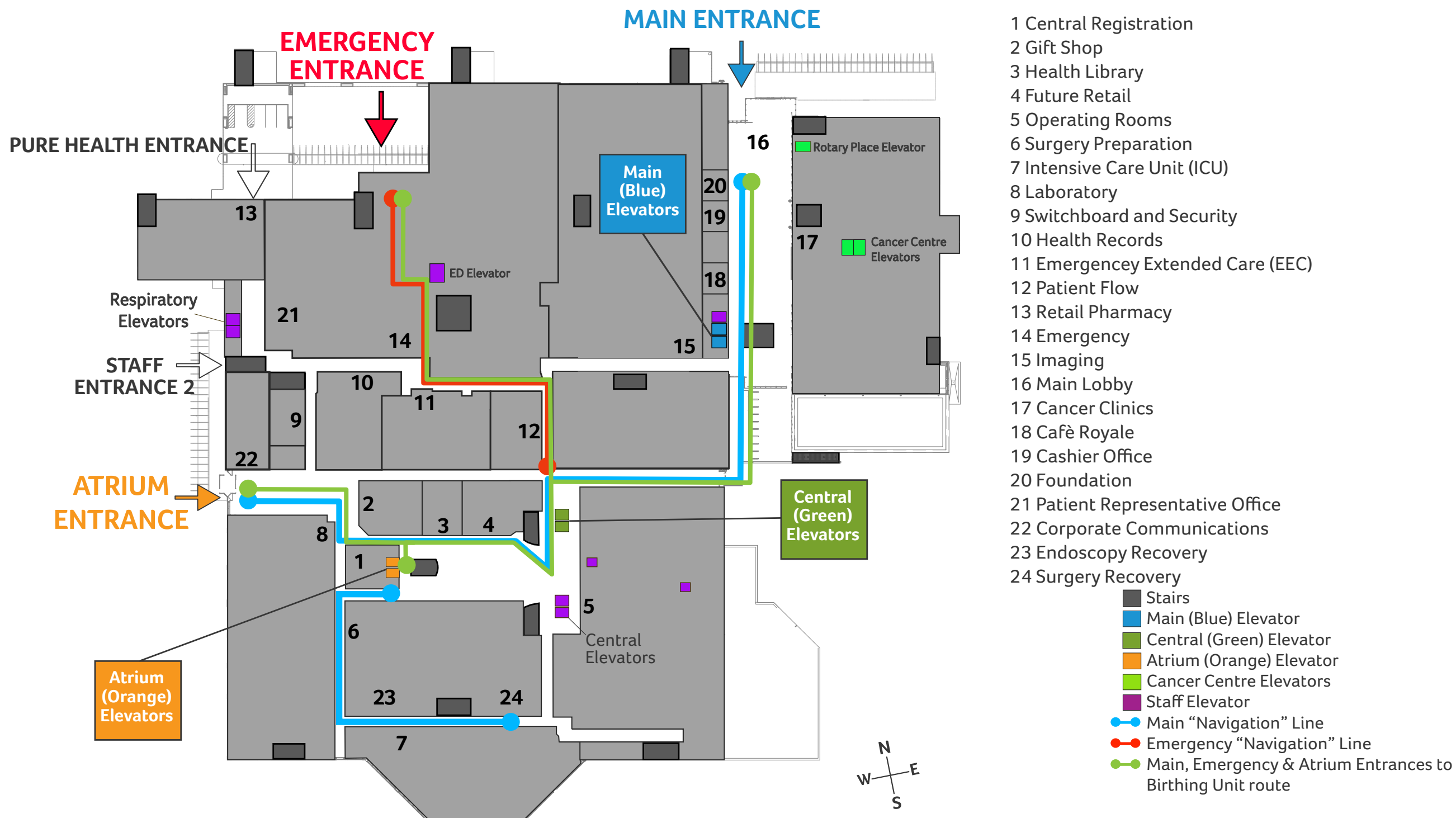


Level 2

Main, Emergency & Atrium Entrances / Birthing Unit

Instructions:

Continue to Birthing Unit by taking Atrium (Orange) Elevators to level 4.

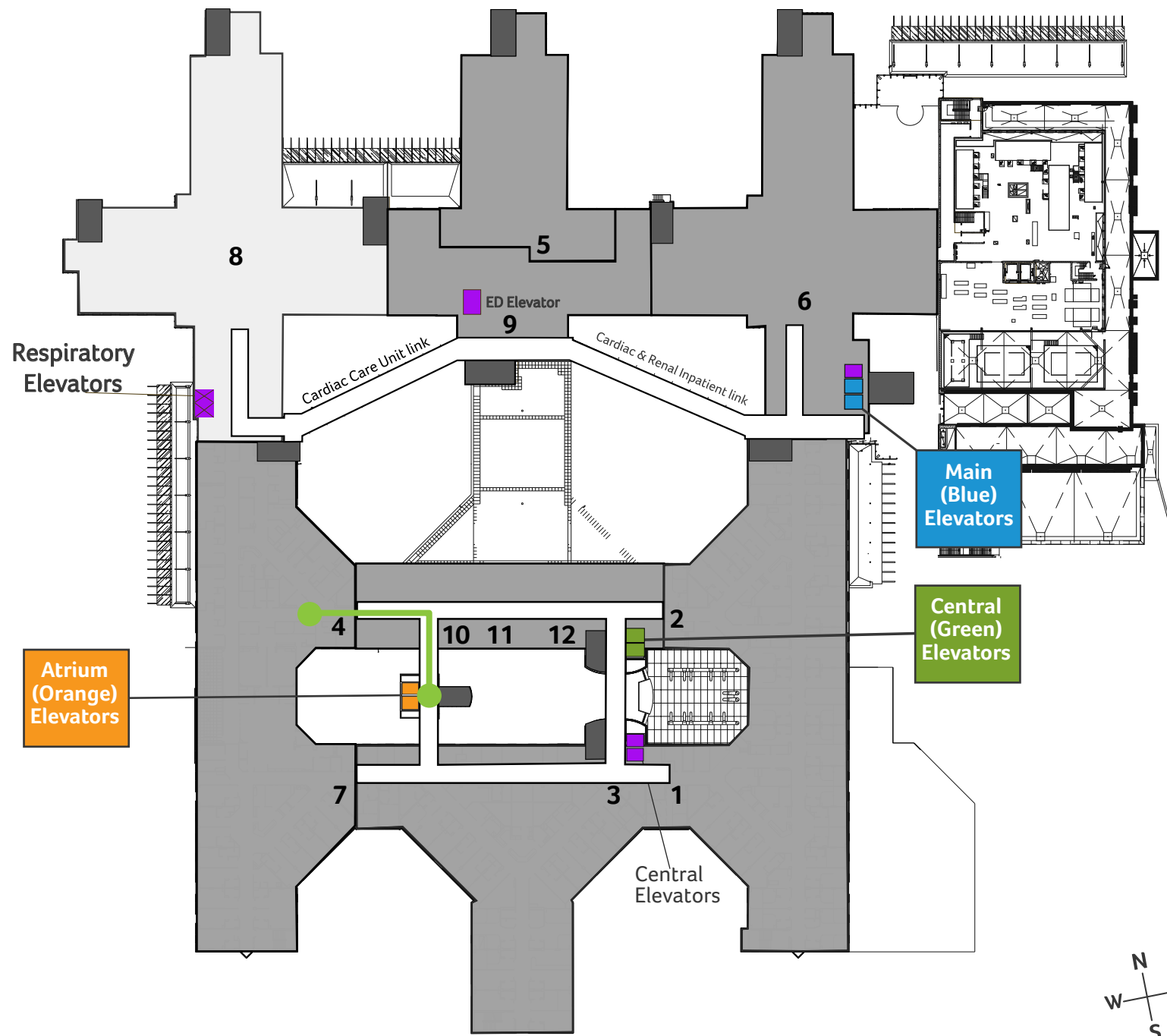


Level 4

Birthing Unit / Main, Emergency & Atrium Entrances

Instructions:

Continue to the Main, Emergency & Atrium Entrance by taking Atrium (Orange)
Elevators to level 2.



- 1 Surgery 1 Inpatient
- 2 Surgery 2 Inpatient
- 3 Surgery 3 Inpatient
- 4 Birthing Unit
- 5 Cardiac Care Unit (CCU)
- 6 Cardiac & Renal Inpatient
- 7 Obstetrics, Child & Youth
Inpatient and New Born Intensive
Care Unit (NICU)
- 8 Shelled
- 9 Meeting Rooms
- 10 Project Management Office
- 11 Telemedicine
- 12 Professional Practice

- Stairs
- Main (Blue) Elevator
- Central (Green) Elevator
- Atrium (Orange) Elevator
- Staff Elevator
- Main, Emergency & Atrium
Entrances to Birthing Unit route

